

Specifications

Models	S-3200		S-3800	
Measurements	Metric	US	Metric	US
Working height maximum*	32.48 m	106 ft	38.58 m	126 ft
Platform height maximum	30.48 m	100 ft	36.58 m	120 ft
Horizontal reach maximum	22.26 m	73 ft	22.26 m	73 ft
Below ground reach	1.98 m	6 ft 6 in	1.98 m	6 ft 6 in
A Platform length	0.76 m	2 ft 6 in	0.76 m	2 ft 6 in
B Platform width	1.52 m	5 ft	1.52 m	5 ft
C Height - stowed	3.13 m	10 ft 3 in	3.20 m	10 ft 6 in
D Length - stowed	13.10 m	43 ft	13.10 m	43 ft
E Width - axles retracted	2.49 m	8 ft 2 in	2.49 m	8 ft 2 in
Width - axles extended	3.35 m	11 ft	3.35 m	11 ft
F Wheelbase	3.66 m	12 ft	3.66 m	12 ft
G Ground clearance - center	0.44 m	1 ft 5.5 in	0.48 m	19 in

Productivity

Lift capacity	340 kg	750 lbs	340 kg	750 lbs
Platform rotation	160°	160°	160°	160°
Turntable rotation	360° continuous		360° continuous	
Turntable tailswing - axle retracted	1.68 m	5 ft 6 in	1.68 m	5 ft 6 in
Turntable tailswing - axle extended	1.22 m	4 ft	1.22 m	4 ft
Drive speed - stowed	4.8 km/h	3 mph	4.8 km/h	3 mph
Drive speed - raised/extended below 80 ft	30 cm/s	1 ft/s	30 cm/s	1 ft/s
Drive speed - raised/extended above 80 ft	14 cm/s	0.5 ft/s	14 cm/s	0.5 ft/s
Gradeability - stowed**	25%		25%	
Turning radius - axle retracted: inside	11.13 m	36 ft 6 in	12.90 m	42 ft 4 in
outside	14.15 m	46 ft 5 in	18.98 m	62 ft 3 in
Turning radius - axle extended: inside	5.13 m	16 ft 10 in	5.62 m	18 ft 6 in
outside	9.30 m	30 ft 6 in	9.78 m	32 ft 1 in
Controls	12 V DC proportional		12 V DC proportional	
Tires - RT solid	385/65D 22.5		445/65D 22.5	

Power

Power source	Cummins B3.3T 4-cylinder turbo diesel, 60 kW (80 hp), air cooled			
	Cummins B3.3T 4-cylinder turbo diesel, 60 kW (80 hp), water cooled			
Auxiliary power unit	12 V DC	12 V DC	12 V DC	12 V DC
Hydraulic tank capacity	208 L	55 gal	208 L	55 gal
Fuel tank capacity	240 L	63 gal	240 L	63 gal

Sound & Vibration Levels

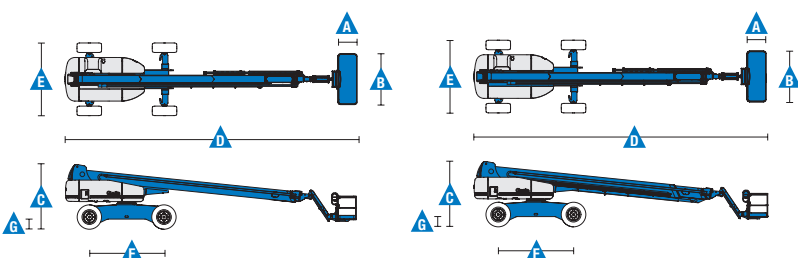
Sound pressure level (ground workstation)	99 dBA	99 dBA	99 dBA	99 dBA
Sound pressure level (platform workstation)	87 dBA	87 dBA	87 dBA	87 dBA
Vibration	<2.5 m/s ²	<8 ft 2 in/s ²	<2.5 m/s ²	<8 ft 2 in/s ²

Weight***

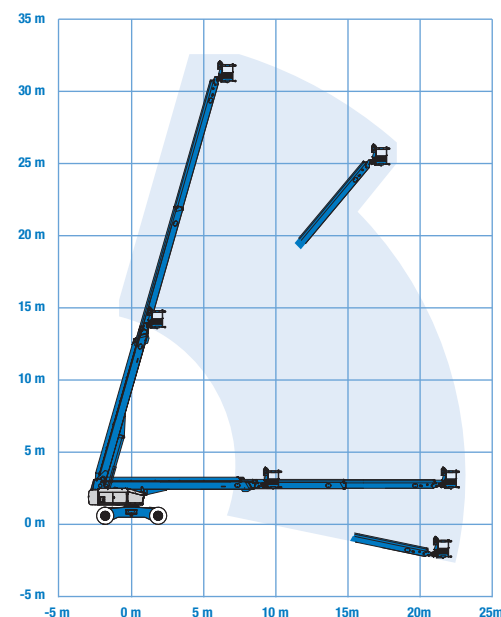
2 WD	18,035 kg	39,760 lbs	20,548 kg	45,300 lbs
------	-----------	------------	-----------	------------

Standards Compliance

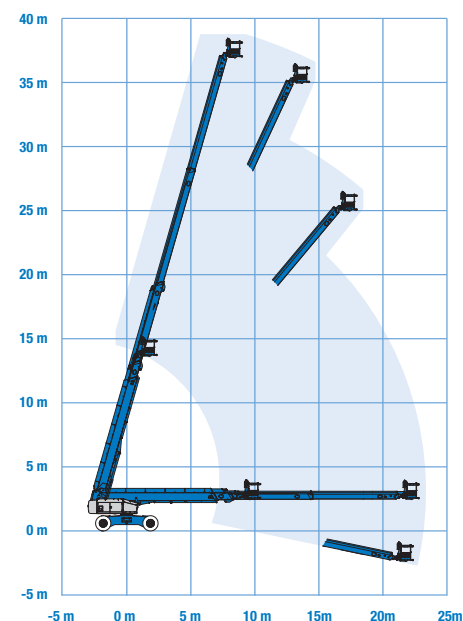
EU Directives: 2006/42/EC - Machinery (harmonized standard EN280:2001+A2:2009); 2004/108/EC (EMC); 2000/14/EC (Outdoor Noise)



Range Of Motion S-3200



Range Of Motion S-3800



* The metric equivalent of working height adds 2 m to platform height.
U.S. adds 6 ft to platform height.

** Gradeability applies to driving on slopes. See operator's manual for details regarding slope ratings.

*** Weight will vary depending on options and/or country standards.

Features

Standard Features	Easily Configured To Meet Your Needs	Options & Accessories
<p>Measurements</p> <p>S-3200</p> <ul style="list-style-type: none"> • 32.48 m (106 ft) working height • 22.26 m (73 ft) horizontal reach • 340 kg (750 lbs) lift capacity <p>S-3800</p> <ul style="list-style-type: none"> • 38.58 m (126 ft) working height • 22.26 m (73 ft) horizontal reach • 340 kg (750 lbs) lift capacity <p>Productivity</p> <ul style="list-style-type: none"> • Self-levelling platform • Hydraulic platform rotation • Fully proportional joystick controls • Dual axis joystick • Hydraulic oil cooler • Drive enable • Tilt alarm • Descent & travel alarms • Flashing beacon • Horn • Hour meter • 360° continuous turntable rotation • Locking steel turntable covers with bump rails • Steel covered, top-mounted cable track • Extra large steel fuel tank with drain port • Swing-out engine tray • Half mesh platform • Platform top auxiliary rail • Deluxe hostile environment kit: cylinder bellows, boom wiper seals, ring gear guard and centre turntable shield • Positive traction drive • Two speed wheel motors • Engine status display • Ground control box covers • Lockable platform control box covers • Certified load sensor <p>Power</p> <ul style="list-style-type: none"> • 12 V DC auxiliary power • Anti-restart engine protection • Auto engine fault shutdown 	<p>Platform Options</p> <ul style="list-style-type: none"> • Steel 1.52 m (5 ft) (standard) <p>Engine Options</p> <ul style="list-style-type: none"> • Cummins turbo diesel 60 kW (80 hp), air cooled (standard) • Cummins turbo diesel 60 kW (80 hp), water cooled ⁽¹⁾ <p>Drive/Steer</p> <ul style="list-style-type: none"> • 2 x 4 (standard) • 4 wheel steer (standard) <p>Axle</p> <ul style="list-style-type: none"> • Extendable axles (standard) <p>Tyres</p> <ul style="list-style-type: none"> • Rough terrain solid 	<p>Productivity Options</p> <ul style="list-style-type: none"> • Power to platform (incl. plug, socket and ground fault interrupt leakage on request) • Platform worklights • Biodegradable hydraulic oil ⁽¹⁾ • Track & Trace ⁽²⁾ (GPS unit providing machine location & operating information) • Tool tray <p>Power Options</p> <ul style="list-style-type: none"> • Diesel catalytic scrubber muffler • Air intake pre-cleaner

⁽¹⁾ Factory-fit option only

⁽²⁾ Includes a first 2 years subscription



United Kingdom

The Maltings, Wharf Road, Grantham NG31 6BH, T: +44 800 988 3739 (toll free), Fax +44 (0)1476 584334, Email AWP-InfoEurope@terex.com

Visit www.genielift.co.uk/locations to view our global locations list.

Worldwide Manufacturing And Distribution

Australia • Brazil • Caribbean • Central America • China • France • Germany • Italy • Japan • Korea • Mexico • Russia • Southeast Asia • Spain • Sweden • United Arab Emirates • United Kingdom • United States

Effective Date: December, 2012. Product specifications and prices are subject to change without notice or obligation. The photographs and/or drawings in this document are for illustrative purposes only. Refer to the appropriate Operator's Manual for instructions on the proper use of this equipment. Failure to follow the appropriate Operator's Manual when using our equipment or to otherwise act irresponsibly may result in serious injury or death. The only warranty applicable to our equipment is the standard written warranty applicable to the particular product and sale and we make no other warranty, express or implied. Products and services listed may be trademarks, service marks or trade names of Terex Corporation and/or their subsidiaries in the USA and many other countries. Genie is a registered trademark of Terex South Dakota, Inc. © 2012 Terex Corporation.

