

GEHL

BACKHOE LOADERS



GEHL
WORKS LIKE YOU™

**BORN ON AN
AMERICAN FARM
IN 1859.**



GEHL[®]

WORKS LIKE YOU[™]

Starting in 1859 GEHL has been rooted in agriculture. Designing and building machines to help America's hardest workers. Many years later, we are offering products world-wide that work just as hard as the farmers and construction workers who own and operate them.

We build machines that make life easier and exceed expectations. Here at GEHL, we know that true satisfaction isn't felt while earth-moving but looking back at a job well-done. That is the true payoff for our operators and built in our DNA at GEHL.

For over 160 years we have been partnering farmers, construction workers, landscapers and rental companies – large and small – to help move mountains and build a strong foundation of trust. **We care about our operators.** Safety and efficiency go into every machine we produce to help hardworking people get home safe and hopefully even a little bit early. ■

The true payoff comes in a job well-done.



**RAISED ON
A GLOBAL
JOB SITE.**



We have always designed and built machines to help the needs of the people who change our landscape. Over time, regulations and the needs of these workers change. GEHL continues to innovate and change with them to supply the most robust durable machines on the market.

Humble and hard working people, responsible for molding and changing the world around us are not overlooked by our brand. With that in mind, GEHL has contributed heavily to the construction industry and is dedicated to continue for many years to come.

GEHL has invested significantly into the future of our products and will continue to change and meet the requirements of urban job sites. Driven by the voice of our customers and industry data we are committed to be here to design, build, service and stand behind our products. We will help you do the heavy lifting.

As the global landscape changes we stay on track supplying machines that are reliable and meet or exceed emissions standards for the future of our planet and our young operators of tomorrow. ■



BACKHOE LOADERS



GBL-X 900

- Engine Gross Power**
 - 67 kw | 90 hp | Kirlaskar
- Operating Weight Standard**
 - 7700 kg | 16,975 lbs
- Operating Weight 4WD**
 - 7800 kg | 17,196 lbs

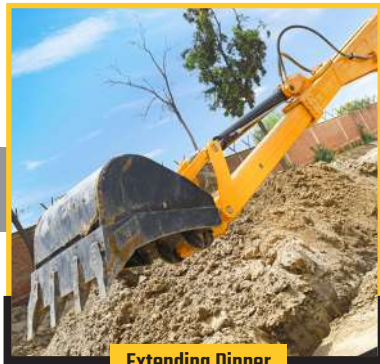
CUSTOMER BENEFITS

- Smooth Operation
- Unbreakable DCPD Bonnett
- Great Visibility from Cab
- Easy Access for Service
- Fuel Efficient
- Increased Comfort + Safety
- Connected Machines



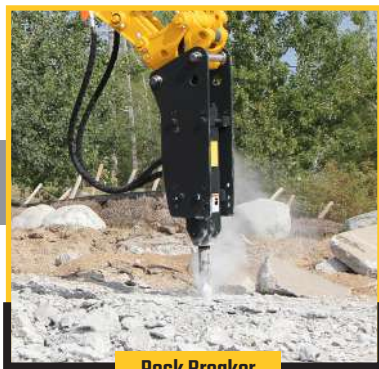
GBL-X 920

- Engine Gross Power**
 - 68 kw | 92 hp | Perkins
- Operating Weight Standard**
 - 7590 kg | 16,733 lbs
- Operating Weight 4WD**
 - 7690 kg | 16,953 lbs



Extending Dipper

The extending dipper adds the additional machine reach by 3.5 feet. This allows to dig a longer flat-bottom trench without having to reposition the machine, thus improving productivity. It also allows the operator to place the soil farther from the trench



Rock Breaker

Max energy Per Blow - 1017 J

High blow energy constant throughout the engine

Revolution range

Powerful, gas fired hammer uses less oil at lower working pressures for greater efficiency

Bucket - 0,20 m³



Excavator Bucket

In the new deep bucket profile, material spillage is avoided

0,10 m³

0,12 m³

0,15 m³

0,18 m³

0,24 m³

0,27 m³

0,31 m³

Ditch cleaning - 0,08 m³

Heavy Duty Bucket - 0,20 m³



Loader Bucket

1,2 m³ multi-purpose bucket with pallet fork standard bucket with fork Grapple Bucket

VERSATILITY FOR YOUR LIFE

ALWAYS READY FOR THE NEXT TASK

Higher Lifting + Dumping Height

GBL offers higher lift height and best in class dumping height for more efficient loader performance. Suitable for filling tippers and heavy body trucks.

Locking Locking Mechanism

In built Loader arm locking strut offering safety during idle position and maintenance work offering best in class safety and less maintenance.

Loader Bucket Cylinder

GBL is equipped with a Single Tilt Diversion Loader Arm. The loader arm is made up of high tensile strength steel offering better visibility, ease in operation and higher tear out forces.

Extreme Conditions

Regionalized cooling system designed to operate in dusty & high ambient temperature environment.





Boom + Dipper Reinforcement

Additional reinforcements on boom and dipper tubes which adds extra strength and is more reliable. Thereby reducing maintenance cost and increasing productivity.

Increased Breakout Forces

GBL offers best in class breakout force allowing the machine to dig without being stressed.

Boom + Swing Cylinder

The powerful cushioning system, integrated in the Boom and Swing cylinders, softens movement at the ends of the stroke to absorb shock and increase cylinder life as well as avoids impacts to the structure.

Smart UCH Optimises Your Consumption

GBL has a powerful hydraulic system, its high performance dual delivery pump unique unloader controlled (UCH) hydraulics are engineered to optimize engine power and thus increases the fuel efficiency.



COMFORT + SAFETY

Operator safety is at the core of every product we build. Remember that you'll be lifting tons, literally tons of material and this operator protection will ensure you're home safe at the dinner table once you leave the job site.

To safely operate, visibility is also a key factor. Our machines feature excellent visibility and additional options (alarms, rearview mirrors, etc) to raise productivity and minimize accidents that are possible during heavy equipment operation.

WHY CHOOSE A **GEHL** BACKHOE LOADER?

GEHL is committed to bringing more value to its backhoe loaders by incorporating advanced and robust features for multi-application capabilities. GBL's are rock solid and reliable. They deliver higher uptime and require low maintenance, even after prolonged usage. Customers get quick returns on their investments on top of an optimum Total Cost of Ownership.

SWING SAFETY

A boom and swing lock lever in the cabin adds additional safety. It is user-friendly, safe and suitable for use during road movements, helping to reduce the cycle time and enhances operator safety.

EMERGENCY STOP SWITCH

An emergency stop button switch is used as a safety measure to stop hazardous action. This switch helps the operator to stop the engine immediately on emergency.

BATTERY CUT OFF SWITCH

A safety measure device to cut off electrical power. Protect against electrical fires and theft when machine is not in use.

GET THE JOB DONE

GRAB RAILS conveniently placed allow for easy entry and exit of the cab ensuring best in class safety.

ADJUSTABLE SUSPENSION SEAT with armrest is provided as a standard feature for enhanced operator comfort. Additionally, the operator can rotate the seat by 180 degrees to access the excavator levers.

CABIN VENTILATION allows for improved operator comfort through the use of rear quarter windows, allowing air flow as well as improved right-angle trenching visibility when open.

POSITION SWITCHES + LEVER are ergonomic and easy to access. The control panel has large, easy to read displays for indicators and warnings.







GBL-X-900



The GEHL GBL-X 900 is built to last. Redefining the landscape by hosting multiple high-level tools. Transforms your workers and multiplies the amount of work you complete on site. With a turn of the operator's chair change from heavy bucket force to true digger power. Equipt with outriggers to stablize the machine, add lifting power and keeping our operators safe. Warriors in any urgan work environment. Often used in construction, small demolitions, building material handling, powering building equipment, digging holes/ excavation, landscaping, breaking asphalt, and paving roads... just to name a few.

3819 kg

LIFTING CAPACITY
TO FULL HEIGHT
[PERFORMANCE LOADER]

1460 kg

HYDRAULIC LIFT
CAPACITY
[PERFORMANCE BACKHOE]



Weight and dimensions	
Unladen weight	7730 kg
Unladen weight with 4 WD	7730 kg
Unladen weight with 4 WD 7 in 1	8018 kg
Ground clearance	280 mm
Overall length	7330 mm
Overall width	2330 mm
Cabin height	2830 mm
Overall height	3790 mm
External turning radius over tyres (unbraked / braked)	4200 mm / 3.85 m
External turning radius over bucket (unbraked / braked)	5.70 m / 5.55 m
Standard tyres front / rear	12.5 x 18 - 12 PR / 16.9 x 28-12PR
Optional tyre (front / rear)	9 x 16 - 16 PR / 14 x 25 - 20 PR
Performances	
Travel speed forward 1st / 2nd	5.40 km/h / 8.60 km/h
Travel speed forward 3rd / 4th	19.90 km/h / 40 km/h
Engine	
Engine brand	Kirloskar
Engine model	4R1040TA1 Turbo Charged Water Cooled BSIII
Max. capacity (l)	4,15 l
Gross Power (kW) / Gross Power	90 Hp @ 2200 rpm
Max. torque	350 Nm
Battery / Batteries capacity	12 V / 65 Ah
Transmission	
Transmission brand	Carraro
Number of gears (forward / reverse)	4 / 4
Torque converter stall ratio	2.64:1
Service brake	Wet disc brakes
Hydraulics	
Hydraulic flow	142 l/min
Main relief pressure	225 Bar
Tank capacities	
Hydraulic oil	90 l
Liquid cooling tank volume	16 l
Fuel tank	145 l
Transmission oil	17.50 l
Engine oil	9.10 l
Oil rear axle	17.50 l
Bucket	
Width backhoe bucket	722 mm
Loader standard capacity	1 m ³
Miscellaneous	
Power steering	Yes
Front steer axle of oscillation	2 °
Steering wheels (front / rear)	2 / 2

[PERFORMANCE BACKHOE]

Standard dipper	
p1 - Max dig depth (mm)	4741
r1 - Max reach ground level to slew center (mm)	5730
r2 - Max loading reach (mm)	1996
Max operating height (mm)	5626
Max loading height (mm)	3871
p2 - Max straight wall dig depth (mm)	2602
a10 - Max bucket rotation (°)	194
Total side shift (mm)	1198
Dipper tearout (kgF)	4336
Bucket tearout (kgF)	5810
Hydraulic lift capacity (kg)	1460

[PERFORMANCE LOADER]

Standard shovel	
Max dump angle (°)	51
h26 - Max operating height (loader version) (mm)	4230
h23 - Max dump height at 45° (mm)	2780
h24 - Max loadover height (mm)	3310
h25 - Max hinge pin height (mm)	3570
r - Max reach at full height (mm)	1153
r3 - Max reach at full height 45° (mm)	710
p3 - Below ground dig depth (mm)	156
Rollback at ground (°)	45
Shovel breakout (kgf)	5229
Arms breakout (kgf)	5312
Lifting capacity to full height (kg)	3819

Weight and dimensions

Unladen weight	7620 kg
Unladen weight with 4 WD	7620 kg
Unladen weight with 4 WD 7 in 1	7908 kg
Ground clearance	280 mm
Overall length	7330 mm
Overall width	2330 mm
Cabin height	2830 mm
Overall height	3790 mm
External turning radius over tyres (unbraked / braked)	4200 mm / 3850 mm
External turning radius over bucket (unbraked / braked)	5700 mm / 5550 mm
Standard tyres front / rear	12.5 x 18 - 12 PR / 16.9 x 28-12PR
Optional tyre (front / rear)	9 x 16 - 16 PR / 14 x 25 - 20 PR

Performances

Travel speed forward 1st / 2nd	5.40 km/h / 8.60 km/h
Travel speed forward 3rd / 4th	19.90 km/h / 40 km/h

Engine

Engine brand	Perkins
Engine model	1104C 44T Turbo Charged Water Cooled Tier-II
Max. capacity (l)	4.40 l
Gross Power (kW) / Gross Power	92 Hp @ 2200 rpm
Max. torque	395 Nm
Battery / Batteries capacity	12 V / 75 Ah

Transmission

Transmission brand	Carraro
Number of gears (forward / reverse)	4 / 4
Torque converter stall ratio	3.01:1
Service brake	Wet disc brakes

Hydraulics

Hydraulic flow	142 l/min
Main relief pressure	225 Bar

Tank capacities

Hydraulic oil	90 l
Liquid cooling tank volume	16 l
Fuel tank	145 l
Transmission oil	17.50 l
Engine oil	9.10 l
Oil rear axle	17.50 l

Bucket

Width backhoe bucket	722 mm
Loader standard capacity	1 m ³

Miscellaneous

Power steering	Yes
Front steer axle of oscillation	2 °
Steering wheels (front / rear)	2 / 2

[PERFORMANCE BACKHOE]

	Standard dipper
p1 - Max dig depth (mm)	4741
r1 - Max reach ground level to slew center (mm)	5730
r2 - Max loading reach (mm)	1996
Max operating height (mm)	5626
Max loading height (mm)	3871
p2 - Max straight wall dig depth (mm)	2602
a10 - Max bucket rotation (°)	194
Total side shift (mm)	1198
Dipper tearout (kgF)	4336
Bucket tearout (kgF)	5810
Hydraulic lift capacity (kg)	1460

[PERFORMANCE LOADER]

	Standard shovel
Max dump angle (°)	51
h26 - Max operating height (loader version) (mm)	4230
h23 - Max dump height at 45° (mm)	2780
h24 - Max loadover height (mm)	3310
h25 - Max hinge pin height (mm)	3570
r - Max reach at full height (mm)	1153
r3 - Max reach at full height 45° (mm)	710
p3 - Below ground dig depth (mm)	156
Rollback at ground (°)	45
Shovel breakout (kgf)	5229
Arms breakout (kgf)	5312
Lifting capacity to full height (kg)	3819





The GBL-X 920 is used in construction, small demolitions, building material handling, powering building equipment, digging holes/ excavation, landscaping, breaking asphalt, and paving roads... just to name a few. Then multiply that by the available attachments such as a breaker, grapple, auger, stump grinder, etc. and imagine the endless possibilities. Pushing with on side, pulling with the other, digging and dumping. Moving and reconstructing any jobsite this machine has a huge return on investment (ROI). Strong, job-tested and durable machines built to service and last. Test drive one today at your local dealership.



4741 mm

MAX DIG DEPTH
[PERFORMANCE BACKHOE]

1198 mm

TOTAL SIDE SHIFT
[PERFORMANCE BACKHOE]

MAXIMIZE YOUR MACHINE



Scan with your phone
to learn more and see
a video overview.

EQUIPMENT TRACKING

Know where your machines are at all times, check fuel levels, run time, down time, stay on top of any problems and minimize down-time with the My GEHL app and your connected machines. Automatic notifications are included designed to give you the important information you need immediately to increase your productivity and ensure your GEHL machine WORKS LIKE YOU..

PREDICTIVE ANALYTICS

When running multiple tasks or job sites routine machine upkeep can be forgotten about. Not anymore! Set notifications to alert you of upcoming needed maintenance and repairs. Stay on top of problems before the problem becomes real and hits your profit margin.

SCHEDULE REPAIRS & ORDER PARTS

Review suggested maintenance and schedule repairs right from your phone. This allows your dealer or service mechanic to get your parts on order and be better prepared to get your equipment back out into the field. Think of the app as your new co-worker and reap the benefits today of the NEW My GEHL app.

ALL FROM THE PALM OF YOUR HAND



THE NEW MY GEHL APP IS AVAILABLE FOR
DOWNLOAD FROM THE APP STORE OR ON
GOOGLE PLAY STORE.

TAKE THE POWER OF YOUR MACHINE INTO
YOUR HANDS TODAY!



my
GEHL



FULL SUPPORT

Manitou Group is here to help support and service the machines you love after purchase. From Financing, Warranties, Maintenance and more, we are dedicated to support the end customer. Whether you're in agriculture or construction, Manitou Group provides machines, attachments and services adapted to your daily needs. Our goal is to make your life easier! See what you can accomplish with your new GEHL and keep your peace of mind with Manitou Group services and solutions.

MANITOU GROUP | ATTACHMENTS

MANITOU GROUP | PARTS

MANITOU GROUP | FINANCE

-COMING SOON-

ALL NEW GEHL.COM



CHEK OUT THE NEW [GEHL.COM](https://www.gehl.com)

- SHOP MACHINES
- COMPARE MODELS
- FIND A DEALER
- LOCATE SUPPORT
- WORKING PHOTOS/VIDEOS

Also linked to our social media pages allowing you to join the conversation with other GEHL machine enthusiasts.



FROM YOUR COMPUTER
OR YOUR PHONE!

GEHL[®]

WORKS LIKE YOU[™]

GEHL.COM



Manitou Equipment America, LLC

P.O. Box 179

One GEHL Way

West Bend, WI, USA 53095

P: (262) 334-9461

F: (262) 338-7517

Manitou Group reminds users to read and understand the operator's manual before operating any equipment. Also, make sure all safety devices and shields are in place and functioning properly. Manitou Group reserves the right to add improvements or make changes in specifications at any time without notice or obligation.

© 2023 Manitou Equipment America, LLC. All registered and unregistered marks are owned by Manitou Equipment America, LLC or its affiliates. All rights reserved.

® denotes registration in the United States. Trademarks may or may not be registered in other countries.